

WWW.FRESHNREBEL.COM



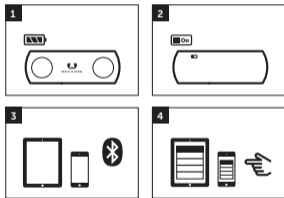
FRESH 'N REBEL

**ROCKBOX
CURVE**

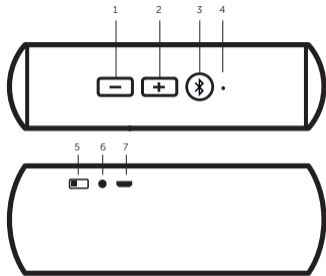
manual

GET CONNECTED!

1. Fully charge your Rockbox Curve before use.
2. Turn on your Rockbox Curve by switching the On/Off button.
3. Enable Bluetooth on your smartphone or tablet.
4. Select the Rockbox Curve from the list of Bluetooth devices.



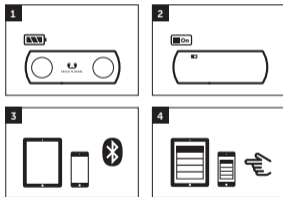
**THE ROCKBOX CURVE IS NOW READY
TO UNLEASH YOUR FAVORITE MUSIC!**



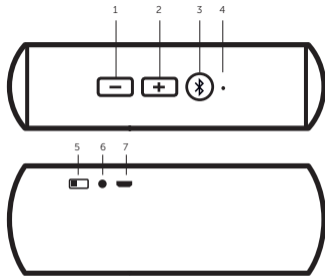
- | | |
|---------------------------------------|-----------------------|
| 1. Previous song / - volume | 5. Power button / LED |
| 2. Next song / + volume | 6. Audio-in |
| 3. ► / Press to answer / end calls | 7. Charge |
| 4. MIC | |

MAAK VERBINDING!

1. Laad je Rockbox Curve volledig op voor gebruik.
2. Schakel je Rockbox Curve in met de aan-uitknop.
3. Schakel Bluetooth in op je smartphone of tablet.
4. Selecteer de Rockbox Curve uit de lijst met Bluetooth-apparaten.



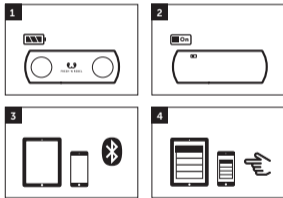
BEVRIJD JE FAVORIETE MUZIEK!



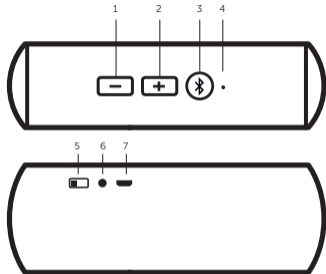
- | | |
|-------------------------------------------------------|----------------------|
| 1. Vorig nummer / - volume | 4. Microfoon |
| 2. Volgend nummer / + volume | 5. Aan-uitknop / LED |
| 3. ► / Druk om oproepen te beantwoorden/beëindigen | 6. Audio-ingang |
| | 7. Opladen |

VERBINDUNG HERSTELLEN

1. Lade die Rockbox Curve vor Gebrauch vollständig auf.
2. Schalte die Rockbox Curve mit der Ein-/Aus-Taste ein.
3. Aktiviere Bluetooth auf deinem Smartphone oder Tablet.
4. Wähle die Rockbox Curve aus der Liste der verfügbaren Bluetooth-Geräte aus.



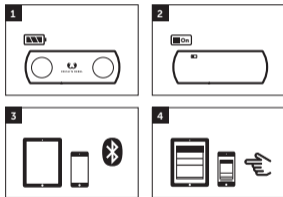
**DEINE ROCKBOX CURVE IST BEREIT FÜR
GRENZENLOSEN MUSIKGENUSS!**



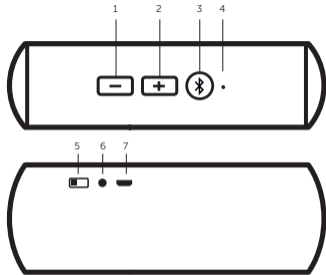
- | | |
|-----------------------------------------------|-------------------------|
| 1. Vorheriger Song / Leiser | 4. Mikrophon |
| 2. Nächster Song / Lauter | 5. Ein- / Aus-Taste LED |
| 3. ▶ / Telefonanrufe
annehmen / beenden | 6. Audioeingang |
| | 7. Laden |

CONNETTITI!

1. Carica completamente Rockbox Curve prima del suo utilizzo.
2. Accendi Rockbox Curve premendo il pulsante di accensione.
3. Abilita il Bluetooth sullo smartphone o sul tablet.
4. Seleziona Rockbox Curve dall'elenco dei dispositivi Bluetooth.



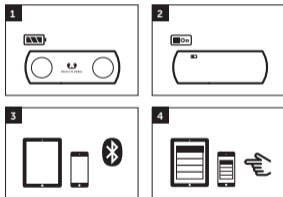
ROCKBOX CURVE È ORA PRONTO A SPRIGIONARE TUTTA LA POTENZA DELLA TUA MUSICA PREFERITA!



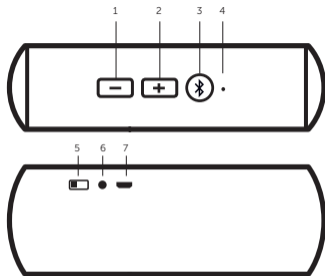
- | | |
|---------------------------------------------------------|---------------------------------|
| 1. Brano precedente / Volume - | 4. Microfono |
| 2. Brano successivo / Volume + | 5. Pulsante di accensione / LED |
| 3. ► / Premere per accettare / terminare le chiamate | 6. Ingresso audio |
| | 7. Ricarica |

¡CONÉCTATE!

1. Carga por completo tu Rockbox Curve antes de utilizarlo.
2. Enciende el Rockbox Curve pulsando el botón de alimentación.
3. Activa la función Bluetooth en tu smartphone o tableta.
4. Selecciona el Rockbox Curve de la lista de dispositivos Bluetooth.



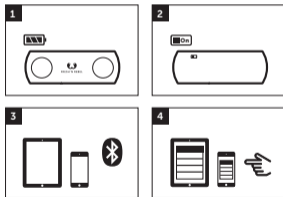
¡EL ROCKBOX CURVE ESTARÁ LISTO PARA QUE DISFRUTES DE TU MÚSICA FAVORITA!



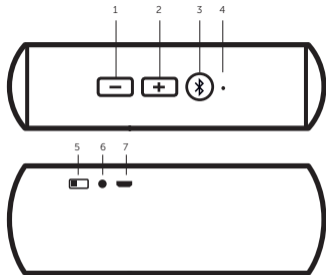
- | | |
|------------------------------------------------------|--------------------------------|
| 1. Canción anterior / - volumen | 5. Botón de alimentación / LED |
| 2. Siguiente canción / + volumen | 6. Entrada de audio |
| 3. ▶ / Pulsar para responder / finalizar llamadas | 7. Carga |
| 4. Micrófono | |

CONNECTEZ-VOUS!

1. Chargez totalement votre Rockbox Curve avant utilisation.
2. Pour allumer votre Rockbox Curve, activez le bouton Marche/Arrêt.
3. Activez la fonction Bluetooth sur votre smartphone ou votre tablette.
4. Sélectionnez le Rockbox Curve dans la liste des périphériques Bluetooth.



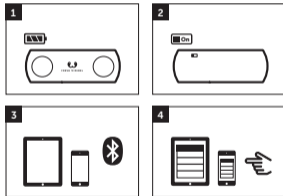
**LE ROCKBOX CURVE EST MAINTENANT
PRÊT À LIBÉRER VOTRE MUSIQUE PRÉFÉRÉE!**



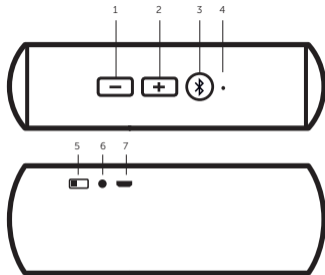
- | | |
|-------------------------------------------------------------------------|------------------------------|
| 1. Morceau précédent / - volume | 5. Bouton Marche-Arrêt / LED |
| 2. Morceau suivant / + volume | 6. Entrée audio |
| 3. ► / Appuyez sur ce bouton pour répondre / mettre fin à des appels | 7. Charge |
| 4. Microphone | |

EM CONTACTO!

1. Carregue totalmente a bateria antes de utilizar a sua Rockbox Curve.
2. Ligue a Rockbox Curve no botão de alimentação.
3. Ative o Bluetooth no seu smartphone ou tablet.
4. Selecione Rockbox Curve na lista de dispositivos Bluetooth.



**A ROCKBOX CURVE ESTÁ PRONTA
A DEBITAR AS SUAS MÚSICAS FAVORITAS!**



- | | |
|--------------------------------------------------|-------------------------------|
| 1. Música anterior / - volume | 5. Botão de alimentação / LED |
| 2. Música seguinte / + volume | 6. Entrada áudio |
| 3. ► / Prima para atender / terminar chamadas | 7. Carga |
| 4. Microfone | |

EC Declaration of Conformity

Sitecom Europe BV • Linatebaan 101 • 3045 AH • Rotterdam • The Netherlands

We declare under our sole responsibility that the following product:

Product number: 1RB600

Product description: Bluetooth Speaker

Low Voltage Directive (LVD)

- EN 60950-1:2006
 - EN 60950-1:2006/A12:2011
 - EN 60950-1:2006/A1:2010
 - EN 60950-1:2006/A11:2009
- UL 2919

Electromagnetic Fields (EMF)

- EN 62311:2008

Electro-Magnetic Compatibility (EMC) Directive

- ETSI EN 301 489-1 V1.9.2

Radio and Telecom Terminal Equipment Directive (R&TTE)

- EN 300 328 V.1.7.1
- EN 300 328 V.1.8.1
- ETSI EN 301 489-17 V2.1.1
- ETSI EN 301 489-17 V2.2.1
- ETSI EN 301 489-1 V1.9.2
- EN 301 489-9 v.1.4.1

are fully in conformity with the essential requirements of the relevant EU Directives and other directives as listed below.

Sitecom Europe BV
Rotterdam, 17-06-2013

M. Bergwerff,



Chief Operations Officer





FRESH 'N REBEL